



Reconnector^{Carbon}

©2001-2003, Infomaker Scandinavia AB

www.reconnector.com support@reconnector.com www.infomaker.se

"It just won't go away!"

infomaker

Contents

What is Reconnector?	3
Installation and registration	4
Updating	7
Example 1: Using Reconnector on an application server	9
Example 2: Using Reconnector in an one user environment	13
Example 3: Using Reconnector in a multi user environment	22
Reference: Commands and functions	31

Please note that this manual is written by the programmer.
Yes, we know! Not too clever. Probably there is a great lack of logic and you can be sure that there's missing a lot of information that the programmer thought was unnecessary to mention.
You can assume that there is a lot of spelling errors and gramatical errors as well.

If you find anything erroneous or any uncertainties please let us know and we'll try to explain the thoughts of the programmer. Please send your questions to support@reconnector.com.

Infomaker Scandinavia AB



Sundsvall 2003-10-13
©2001-2003, Infomaker Scandinavia AB
This manual may be copied but not changed in any way.

All trademarks in this manual is copyrighted by their respective owner.

Portions ©1996-2000 Vertical Systems, Scandinavia AB, Dan Berghult



What is Reconnector?

Automatically mount file server volumes at system start up

Reconnector connects automatically to the correct file server and mounts the chosen volumes at startup. System requirements are a Power Macintosh with Mac OS 8.x, 9.x or 10.x and Apple share 3.7 or higher version.

Automatic reconnection

A common problem is when the file server you are logged on to disappears from the desktop. Reconnector solves that problem and reconnects you automatically as soon the file server is available. This is a big problem especially with standalone computers (Application servers) which should be connected to certain file servers to function properly.

Makes sure that applications startup and that they keep running

At startup it is common practice too have several applications launched after you have connected to the correct file server(s). Reconnector connects and launches the chosen applications. On top of that there is a useful function keeping those applications up and running. If a certain application terminates by mistake or of some malfunction, Reconnector will launch it again automatically.

As an alternative to the Chooser

Reconnector can also be used to connect to several file servers at once. By creating configurations for different users/groups, it is possible for these users/groups to log on at "their" specific file server in a user-friendly manor. This option suits users which travels a lot and need access to different file servers depending on where they at.

This is very practical for the PowerBook user who often let their PowerBook sleep and don't shut it down.

Security and easy to use

Reconnector is very easy to install, administrate and use. You can password protect your configurations. The login and password information is encrypted in such way that no one can move the configuration without the correct password.

Installation and registration

Installation and registration

1. Copy Reconnector to a folder of your choice.
2. Mac OS X:
If you want Reconnector to launch at startup, drag Reconnector to Login items in the Control panel.

Mac OS 9:
If you want Reconnector to launch at startup, create an alias of it and put the alias into the Startup Items folder in the Systemfolder.
3. If you want any applications, documents or folders to be launched or opened at startup, create aliases of these and put them in Reconnectors Startup Items folder. The Startup Items folder is created when Reconnector launches the first time.
If you do this - Reconnector ensures that all volumes have been mounted on the desktop before any applications launches or document and folders are opened.



Reconnector Startup Items

4. If you are installing Reconnector for the first time a registration window is opened. There you fill in your name, company and serial number. Click OK and you are done. You can order a valid serial number on our site: www.reconnector.com.

Register

Name

Company

Serial number

Cancel OK

To obtain a serialnumber please order from our website:
www.reconnector.com

This copy of Reconnector has not been registered.

The demo button will soon activate. Reconnector will run for a limited time. Once in a while this window might appear. Please help us to develop great products by registering Reconnector.

Thanks,
Dan Berghult, Infomaker

Demo

Reconnector Demo

If you want to evaluate Reconnector press the Demo button (This button gets activated after 10 seconds). The evaluation period is 14 days.

During the first 10 days of the evaluation period Reconnector behaves just as if it was an ordinary licensed version. After 10 days Reconnector might occasionally throw up dialog windows to inform that the current installation is a demo version. After 14 days Reconnector will quit itself when being launched.

You can see by the orange color of Reconnectors main window that it is running in demo mode.



Reconnector 2.0



Reconnector prefs



Configurations
2 objekt



Reconnector Startup Items
2 objekt



Reconnector log.txt

The contents of the Reconnector folder

The first time that Reconnector starts up it creates some files and folders. If you can't see these files and folders you probably haven't launched Reconnector.

Reconnector

The application itself.

Reconnector preferences

Reconnectors preference file is created by default in the Reconnector folder.

If you prefer you can move it to the Preference Folder in the System Folder. But before moving it make sure that Reconnector isn't running.

Configurations

This folder contains your configurations and it contains at least one configuration file. By default a configuration file is created when Reconnector launches for the first time. Configurations can only be renamed from within Reconnector.

A configuration file can't be moved from one computer to another computer unless you know that particular configurations password. All configuration files are encrypted and can only be imported from within Reconnector. This rather intricate behavior is to ensure that our AppleShare passwords and configurationfiles can't end up in the wrong hands.

Startup items

Any application, document or folder can automatically be launched or opened at startup after that Reconnector has mounted it's AppleShare volumes.

To do this you create aliases of the applications, documents and folders and places these aliases in Reconnectors Startup items folder.

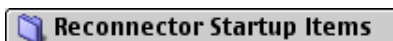
Don't forget to put an alias of Reconnector in the Startup items folder in the System folder.

Reconnector log.txt

This file contains log information can be of good help when trying to pin down problems. The log files size if configurable from within Reconnector.

Tip: Mac OS 9: Open the Startup items folder and drag it down to the bottom of the screen so it collapses to a button.

By doing this you have a very nice shortcut to your Reconnector Startup items.



Updating Reconnector

Updating Reconnector

- 1 Replace the old Reconnector application with the new one.



- 2 Remember to update any aliases that points to the older version of Reconnector.
- 3 If you are updating from Reconnector 1.x then you should put the content of the Startup items into the Reconnector Startup Items folder and after you have done that, delete the old Startup items folder.
- 4 If you update from reconnector 1.7 then you need to enter the Name, Company and Serialnumber for Reconnector 2.0.

Example 1: Application server

Use Reconnector on an application server

What is an application server?

The way we see it, an application server is an unattended computer performing operations and services. To function properly the application server needs to have certain file server volumes mounted on the desktop.

How do you use Reconnector on an application server?

You probably want Reconnector to mount server volumes at startup and you also want these volumes to remount if the fileserver restarts or if there's a network problem. You probably want your applications to be started by Reconnector and that Reconnector launches these applications if they are quit. We assume that you want Reconnector to restart the computer each night to ensure that we have a fresh system every day.

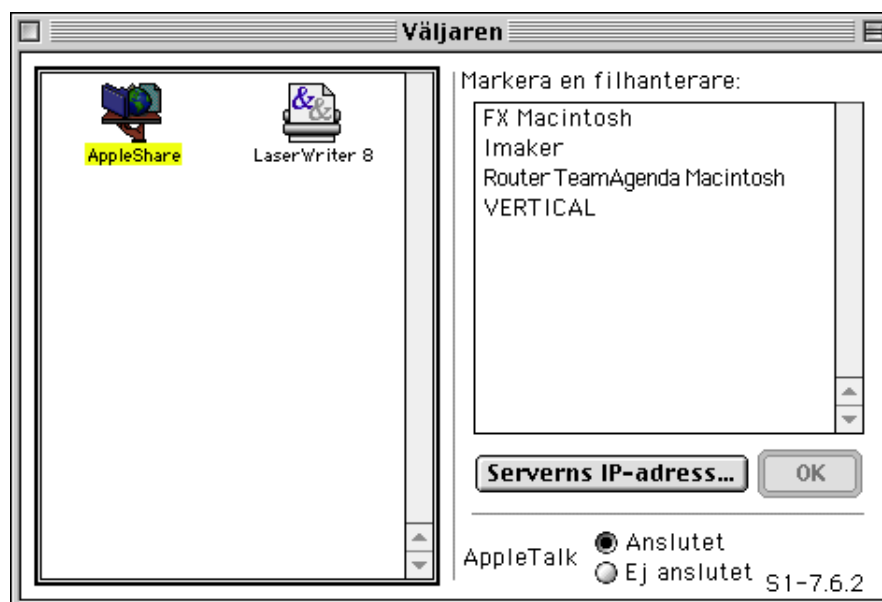
You are probably not interested in having different configurations in this scenario.

How do I configure Reconnector in this case?

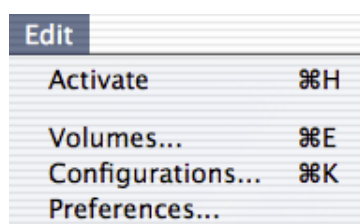
- 1 Mac OS X
Mount all server volumes that you want Reconnector to manage with the correct username and password using Go:Connect to Server (⌘-K).

Mac OS 9

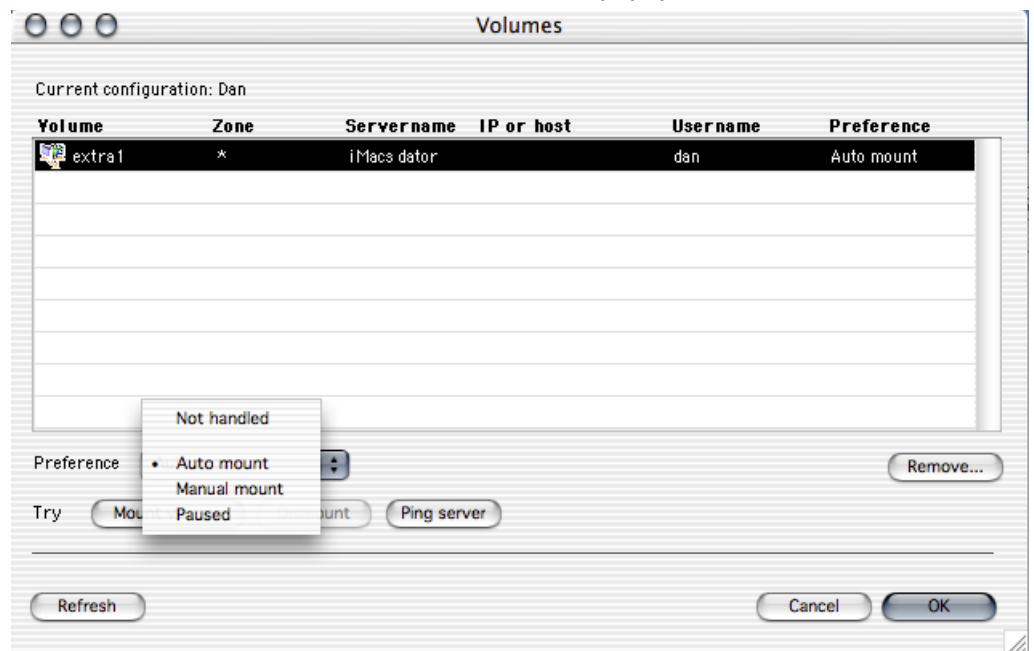
Mount all server volumes that you want Reconnector to manage with the correct username and password using the Chooser.



- 2 Choose Volumes... from Reconnectors Edit menu.

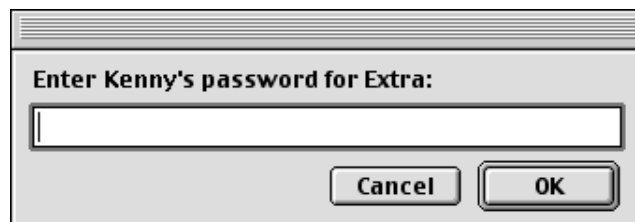


- 3 Select the volumes that you want to automatically mount. When you have selected the volumes choose Auto mount from the Preference popup menu.



If you want more information regarding different options in the Preferences popup menu please see the reference section of this manual.

- 4 Enter the password in the following dialog box. You have to enter a password for each file server.



Note: All passwords are encrypted.

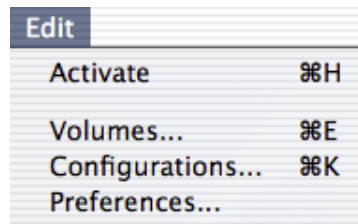
- 5 Click OK.
- 6 If you want Reconnector to launch applications and to open documents and folders create aliases of these objects and put the aliases into Reconnectors Startup items folder.



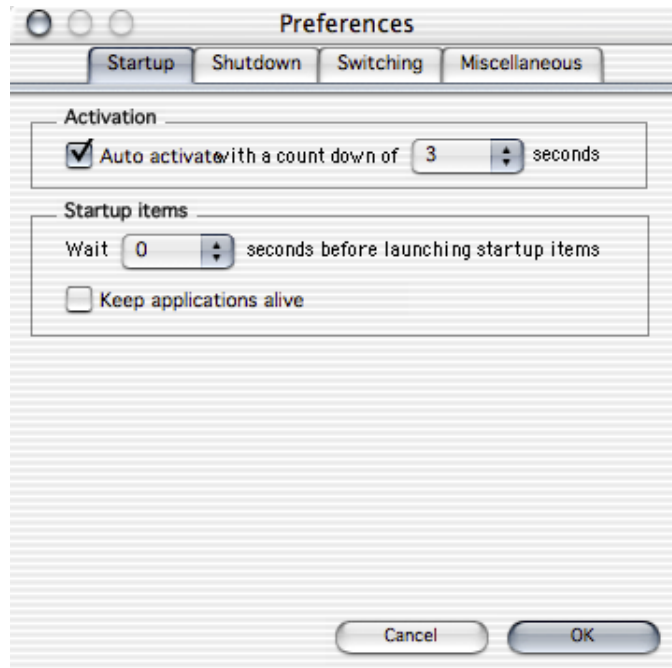
Reconnector Startup Items

Note: You need to Deactivate/Activate Reconnector to make sure that Reconnector discovers the startup items.

- 7 Choose Preferences... from the Edit menu.



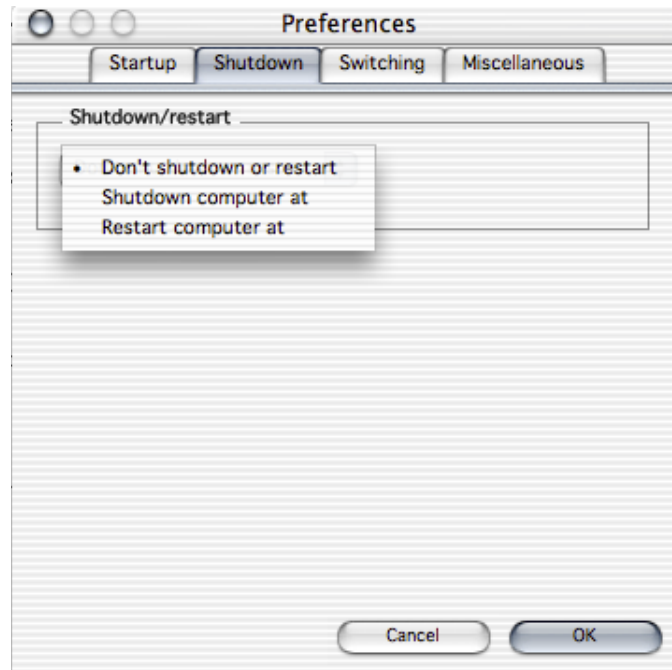
- 8



Check the *Auto activate with a count down* checkbox to make Reconnector auto activate itself when launched. A countdown window will appear allowing you to interrupt the startup process. If you want you can modify how long Reconnectors count down will be. If you have a bad network connection a longer countdown might be needed to allow the system to initiate AppleTalk or TCP/IP.

- 9 Select how long time Reconnector will wait before launching the Startup items. A long wait time might be necessary if large volumes of fonts are being loaded by fontmanagement software. The long wait will make sure that the Startup Items aren't launched until the fonts are loaded.

10



Select Restart computer from the *Don't shutdown or restart* popup menu and enter a time when you want the computer to be restarted. The delimiter between hours and minutes depends on what the current time format is in the computer. Look in the Systems Date and Time control panel to be sure of what to use.

11 Press OK.

Note: Don't forget to put an alias of Reconnector in the Startup items system folder (Mac OS 9) or in Login items in the control panel in Mac OS X.

Example 2: Single user

How to use Reconnector as a single user

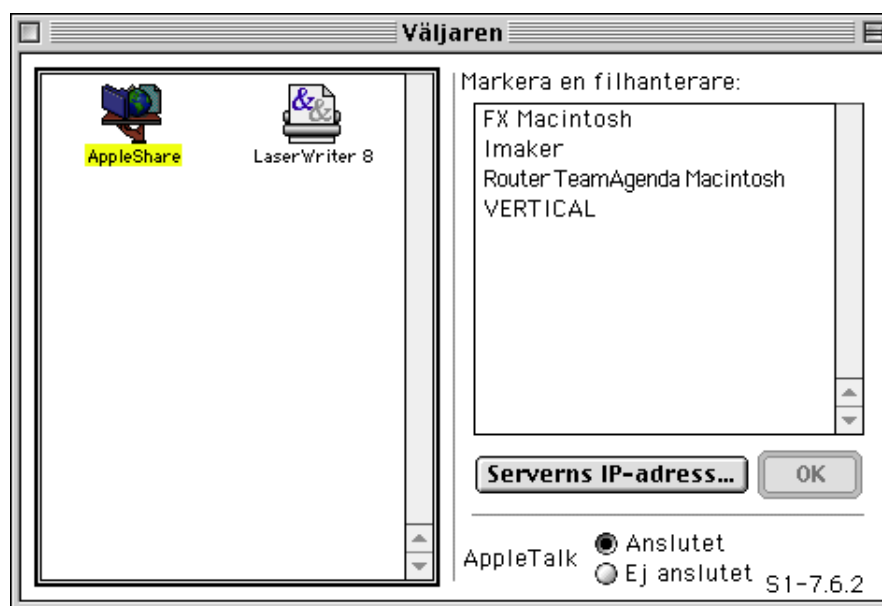
How do you use Reconnector as a single user?

As a single user of Reconnector you probably want to use Reconnector to remember all your file server volumes. Maybe you travel a lot and uses your computer in various networks with various file server volumes and want to be able to mount these file server volumes as simple as possible.

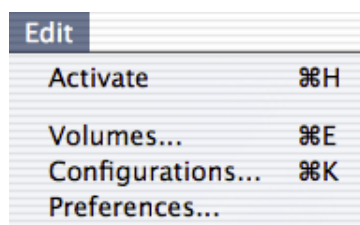
You probably don't want Reconnector to open applications, folders or documents for you. Maybe you want to be able to manually open applications from within Reconnector.

How do I configure Reconnector in this case?

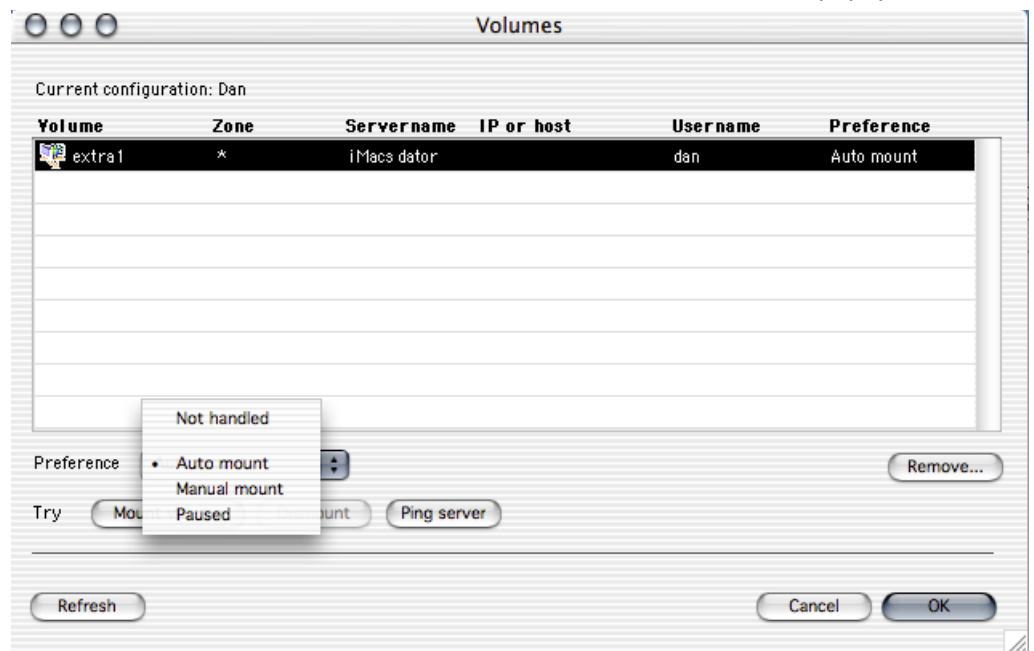
- 1 Mount all server volumes that you want Reconnector to manage with the correct username and password using the Chooser.



- 2 Choose Volumes... from the Edit menu from within Reconnector.



- 3 Select the volumes that you want to automatically mount and remounted. When you have selected the volumes choose Auto mount from the Preference popup menu.



If you want more information regarding different options in the Preferences popup menu please see the reference section of this manual.

- 4 Enter the password in the following dialog box. You have to enter a password for each file server.

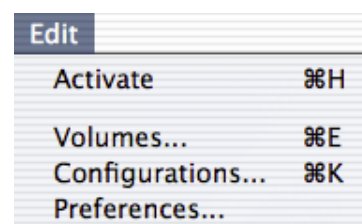


Note: All passwords are encrypted.

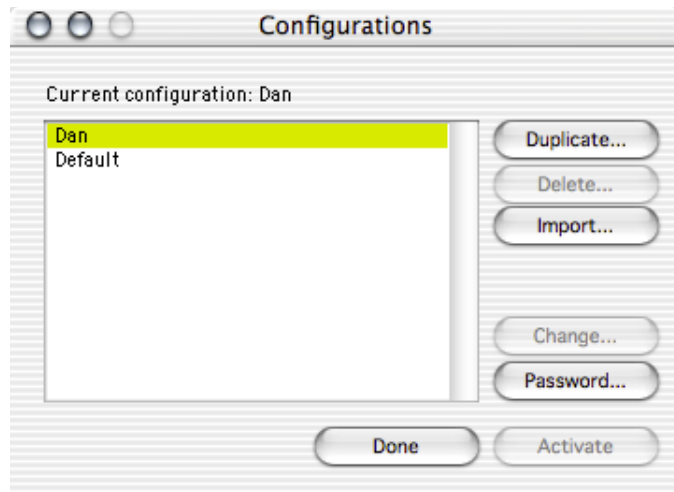
- 5 Click OK.

Create a new configuration

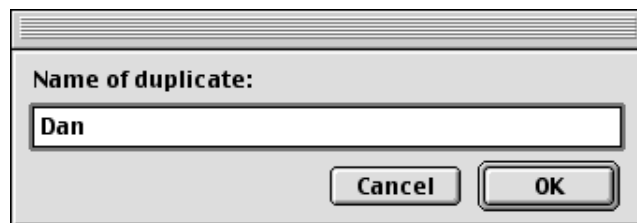
- 6 If you want different sets of file server volumes to choose from then you have to create a new configuration. Choose Configurations... from the Edit menu.



- 7 There is no command to create a new Configuration. Instead you duplicate an existing one.
Select the configuration you want to duplicate then click on the Duplicate... button.



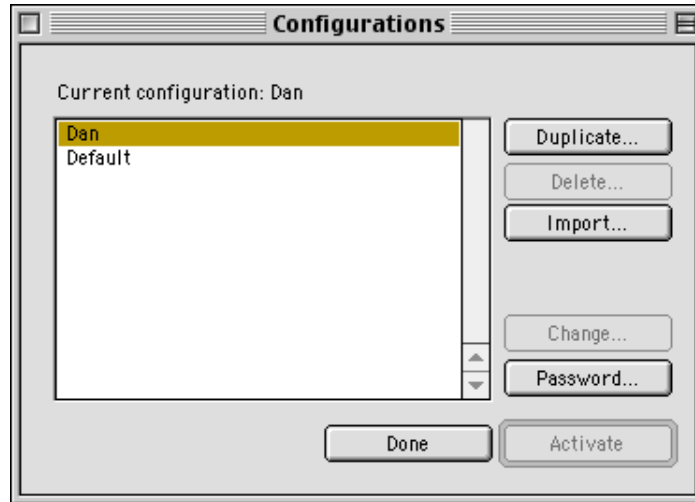
- 8 Give the new Configuration a name. This name can be changed later on.



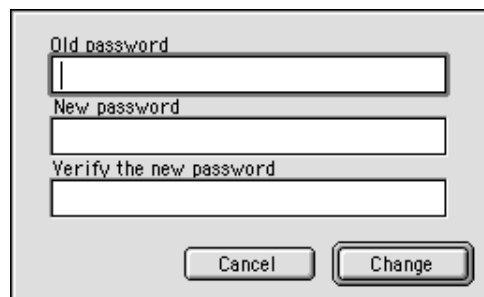
- 9 Click OK.
- 10 Select the new configuration and make it the active configuration by pressing the Activate button. The window Configurations will now close.

Password protect a configuration

- 11 Open the window Configurations again.
- 12 Select the created configuration and click on the button Password...



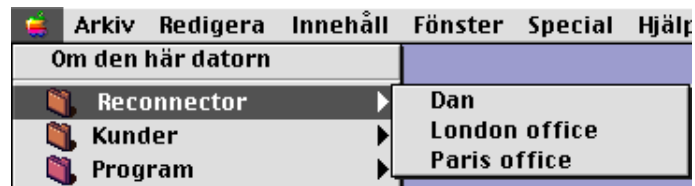
- 13 Leave the Old password field empty.
Enter your password in the New password field and then enter the password in the Verify password field.



- 14 Click OK.

Create shortcuts in the Apple menu (Mac OS 9)

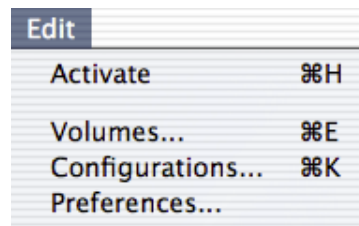
- 15 Open the folder Apple menu that resides in the System Folder.
- 16 Create a new folder called Reconnector in the Apple menu folder. (The name is just an example.)
- 17 Create an alias to each configuration that you want to show up in the Apple menu and place the aliases in the Reconnector folder that is in the Apple menu folder. The configurations are found in the folder Configurations in the same folder as Reconnector.
- 18 It might look something like this in the Apple menu.



By doing this it is very easy to change Reconnector Configuration.

Setting the Preferences

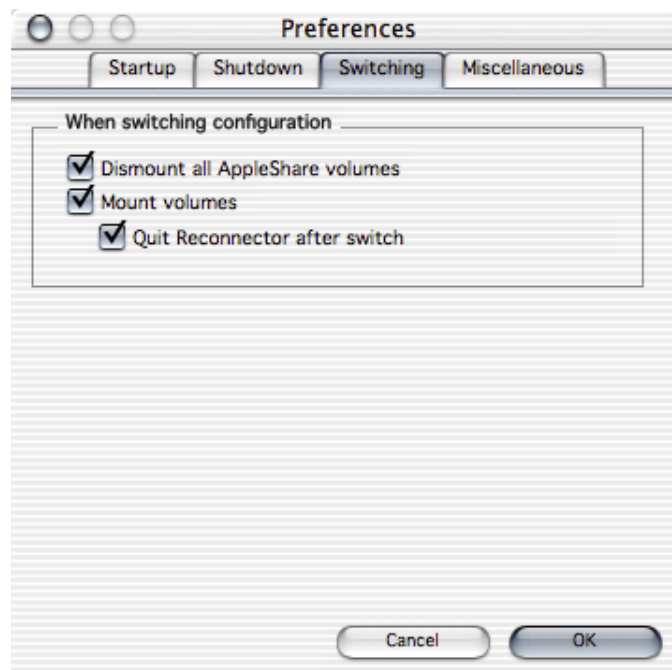
- 19 Open the Preference window by choosing Preferences... from the Edit menu.



- 20 Click on the *Switching* tab.
If wanted, activate *Dismount all AppleShare volumes*. This means that if you choose another configuration, all connected AppleShare volumes will be disconnected.

If *Mount volumes* is activated Reconnector will attempt to mount all corresponding volumes.

If *Quit Reconnector after switch* is activated, Reconnector will quit after mounting volumes predefined in the chosen configuration.



- 21 Click OK.

Tip: If you want to see a different configuration's Volumes, you can open both the Configurations windows and the Volumes window. In the Configurations window you can double click on each configuration to see its corresponding Volumes settings..

How do I use Reconnector?

Reconnector can be used in two ways.

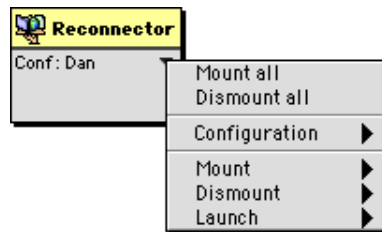
- 1 You can mount volumes one by one, switch configurations and start applications from Reconnectors main window.



- 2 You can switch configuration and all corresponding volumes will be mounted automatically.

What can I do in Reconnectors main window?

In Reconnectors main window there's a popup menu from which you can execute some of Reconnectors commands.



Mount all ⌘-Shift-M
Mount all volumes in the current configuration

Dismount all ⌘-Shift-D
Dismount all volumes that are currently mounted.

Configuration
You can change configuration thru this submenu.

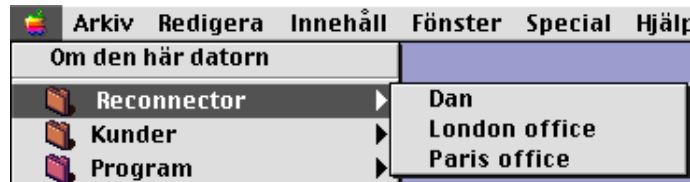
Mount
Mount a volume from this sub menu.

Dismount
Dismount a volume from this sub menu.

Launch
Launch an application of your choice. This assumes that you have placed at least one application alias in the folder Startup items located in Reconnectors folder.

Working from the Apple menu

Assuming you have created an alias of the configurations folder and placed it in your Apple menu, you can easily choose and change the configuration you wish to work with simply by selecting it from the Apple menu. You can also select the configuration that is already chosen to mount the predefined volumes.



WORKING WITH RECONNECTOR IN MULTI USER ENVIRONMENT

Working with Reconnector in multi user environment

Working with multiple users is very similar to working as a sole user.

The difference is that you in the multiple user case probably are working stationary and have created one configuration for each user.

Different users probably prefer to change configuration thru the Apple menu as described in the previous chapter. You could say that different configurations are different users.

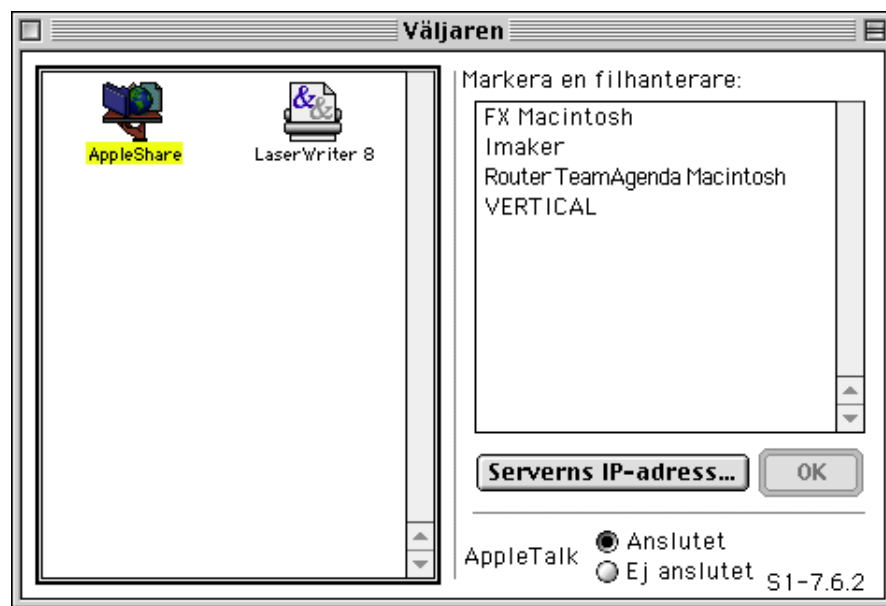
It is also very likely that the users themselves are not responsible for creating and setting up their configuration. It's most likely done by someone that administrates that computer.

Let's assume that Reconnector won't be started automatically and that it shall not launch any applications either.

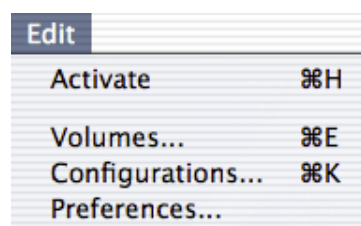
Remember that if you want the user X and the user Y to connect with their own users when selecting their configuration you have to connect with their specific user name when setting up Reconnector

How do I configure Reconnector in this case?

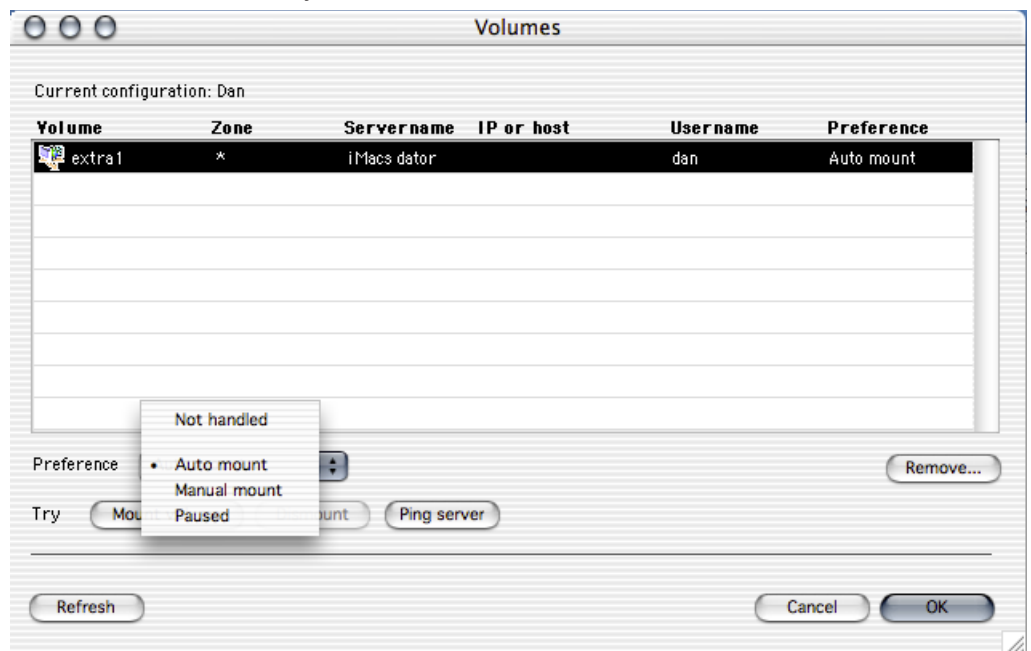
- 1 Connect to all the volumes you want Reconnector to handle using the Chooser.



- 2 Choose Volumes... from the Edit menu.

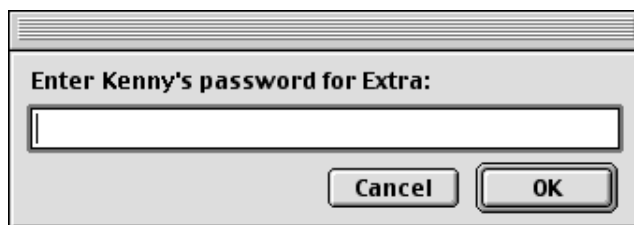


- In the Volumes window, select the volume you wish to have mounted upon startup and to be remounted in case you are disconnected. Then choose Automount from



If you want more information regarding different options in the Preferences popup menu please see the reference section of this manual.

- Enter the password in the following dialog box. You have to enter a password for each file server.

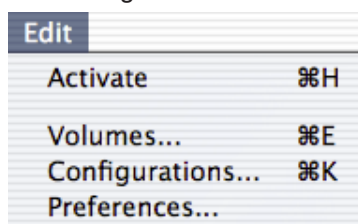


Note: All passwords are encrypted.

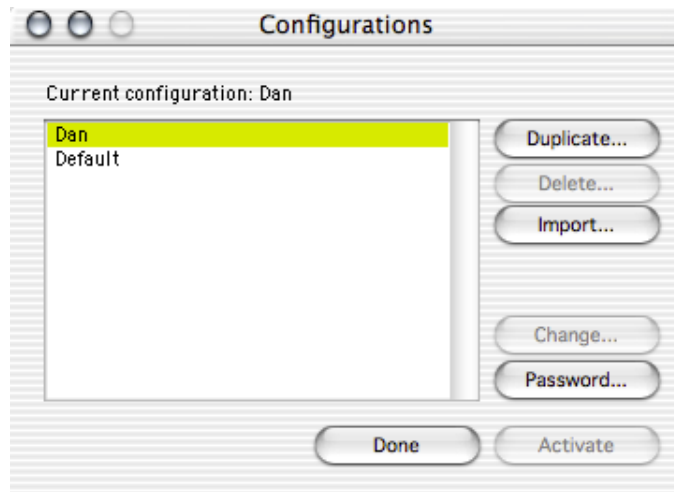
- Click OK.

Create a new configuration

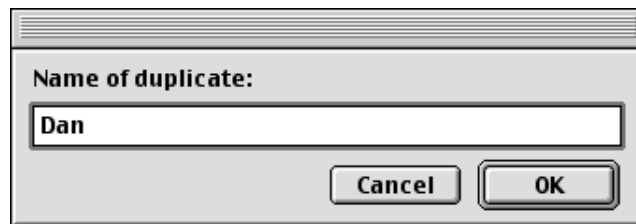
- If you want different sets of file server volumes to choose from then you have to create a new configuration. Choose Configurations... from the Edit menu.



- 7 There is no command to create a new Configuration. Instead you duplicate an existing one.
Select the configuration you want to duplicate then click on the Duplicate... button.



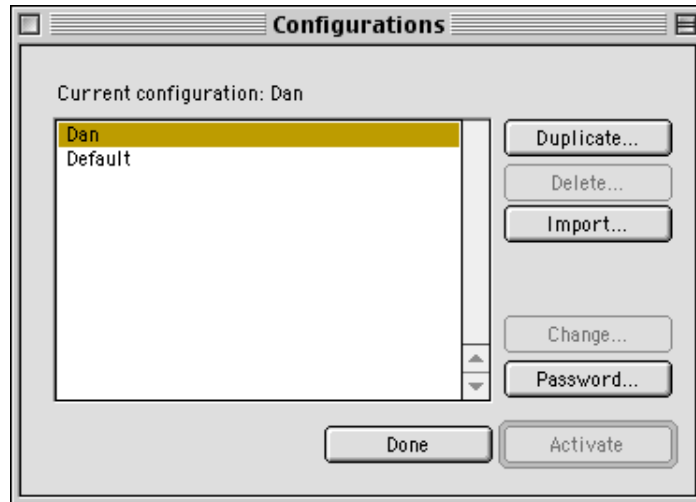
- 8 Give the new Configuration a name. This name can be changed later on.



- 9 Click OK.
- 10 Select the new configuration and make it the active configuration by pressing the Activate button. The window Configurations will now close.

Password protect a configuration

- 11 Open the window Configurations again.
- 12 Select the created configuration and click on the button Password...



- 13 Leave the Old password field empty.
Enter your password in the New password field and then enter the password in the Verify password field.

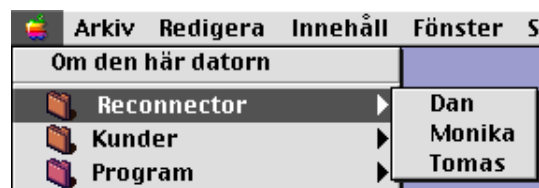


- 14 Click OK.

Repeat step 1 to 14 for each configuration you want to create. If you want each configuration (user) to logon to the fileserver using it's own AppleShare username and password then you must logon to the server with the Chooser for each user/configuration you are creating. If you don't then each configuration will use the same username and therefore get the same privileges.

Create shortcuts in the Apple menu (Mac OS 9 only)

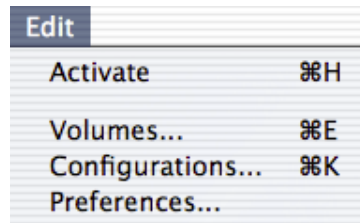
- 15 Open the folder Apple menu that resides in the System Folder.
- 16 Create a new folder called Reconnector in the Apple menu folder. (The name is just an example.)
- 17 Create an alias to each configuration that you want to show up in the Apple menu and place the aliases in the Reconnector folder that is in the Apple menu folder. The configurations are found in the folder Configurations in the same folder as Reconnector.
- 18 It might look something like this in the Apple menu.



By doing this it is very easy to change Reconnector Configuration.

Setting the Preferences

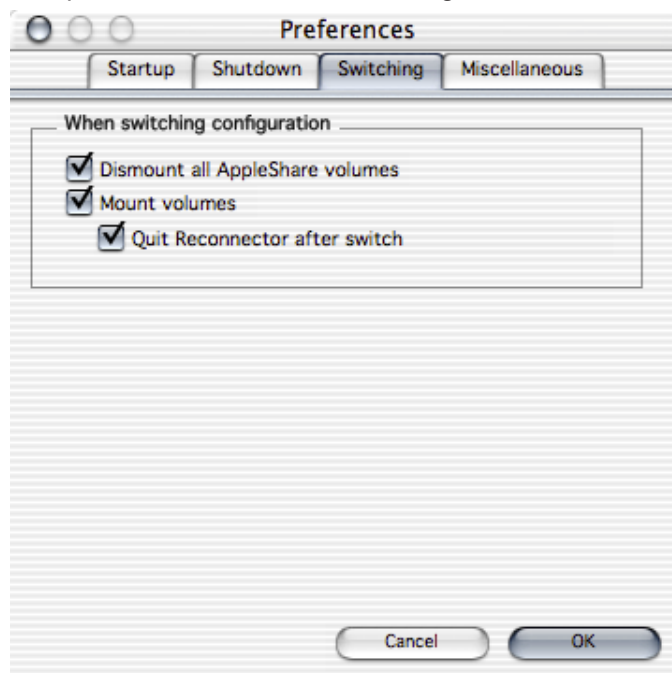
- 19 Open the Preference window by choosing Preferences... from the Edit menu.



- 20 If wanted, activate *Dismount all AppleShare volumes*. This means that if you choose another configuration, all connected AppleShare volumes will be disconnected.

If *Mount volumes* is activated Reconnector will attempt to connect all corresponding volumes

If *Quit Reconnector after switch* is activated, Reconnector will quit after mounting volumes predefined in the chosen configuration.



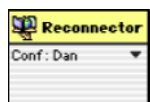
- 21 Click OK.

Tip: If you want to see a different configuration's Volumes, you can open both the Configurations windows and the Volumes window. In the Configurations window you can double click on each configuration to see it's corresponding Volumes settings..

How do I use Reconnector?

Reconnector can be used in two ways.

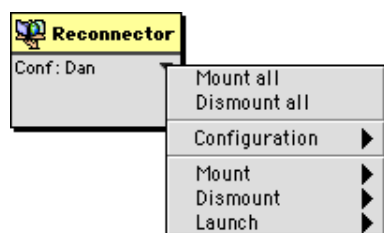
- 1 You can mount volumes one by one, switch configurations and start applications from Reconnectors main window.



- 2 You can switch configuration and mount corresponding volumes directly from the Apple menu. This is probably the easiest way to use Reconnector in a multi-user environment in Mac OS 9.

What can I do in Reconnectors main window?

In Reconnectors main window there's a popup menu from which you can execute some of Reconnectors commands.



Mount all ⌘-Shift-M

Mount all volumes in current configuration

Dismount all ⌘-Shift-D

Dismount all volumes that are currently connected

Configuration

Thru this sub menu you can easily switch configuration and check which configuration that is currently active.

Mount

Mount a selected volume from this sub menu.

Dismount

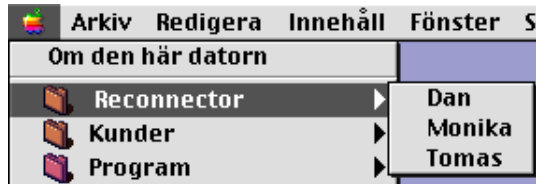
Dismount a selected volume from this sub menu.

Launch

Launch an application of your choice. This assumes that you have placed at least one application alias in the folder Startup items located in Reconnectors folder.

Working from the Apple menu

Assuming you have created an alias of the configurations folder and placed it in your Apple menu, you can easily choose and change the configuration you wish to work with simply by selecting it from the Apple menu. You can also select the configuration that is already chosen to mount the predefined volumes.

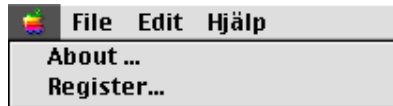


REFERENCE

Reference

This is a complete description of all menus, commands and all the windows in Reconnector.

The Apple menu/Reconnector menu



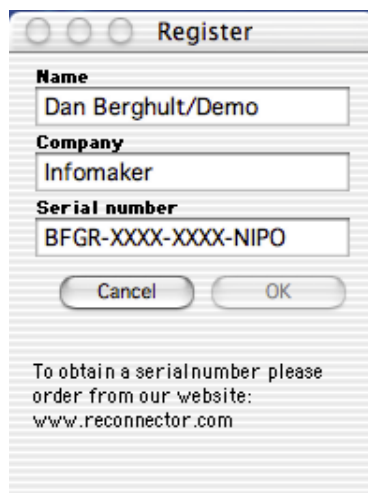
About...

Show Reconnector About-window.



Register...

This window is used for registration of Reconnector. Fill in name, company name and serial number completes the registration. To obtain a valid serial number contact Infomaker at sales@infomaker.se



The File menu

File	Edit
Mount all	⇧ ⌘ M
Dismount all	⇧ ⌘ D
Show log...	⌘ L
Quit	⌘ Q

Mount all ⌘-Shift-M
Mounts all volumes in the chosen Configuration.

Dismount all ⌘-Shift-D
Dismounts all Apple Share volumes that are active in the desktop.

Show log ⌘-L
Shows the log file in the log window. Be aware of the fact that, the log window shows the last 31000 characters. To read the complete log file you need to open it with an ordinary text editor like BBedit or Tex-Edit.

Quit ⌘-Q
Quits Reconnector.

Edit-menyn

Edit	
Activate	⌘H
Volumes...	⌘E
Configurations...	⌘K
Preferences...	

Activate ⌘-H

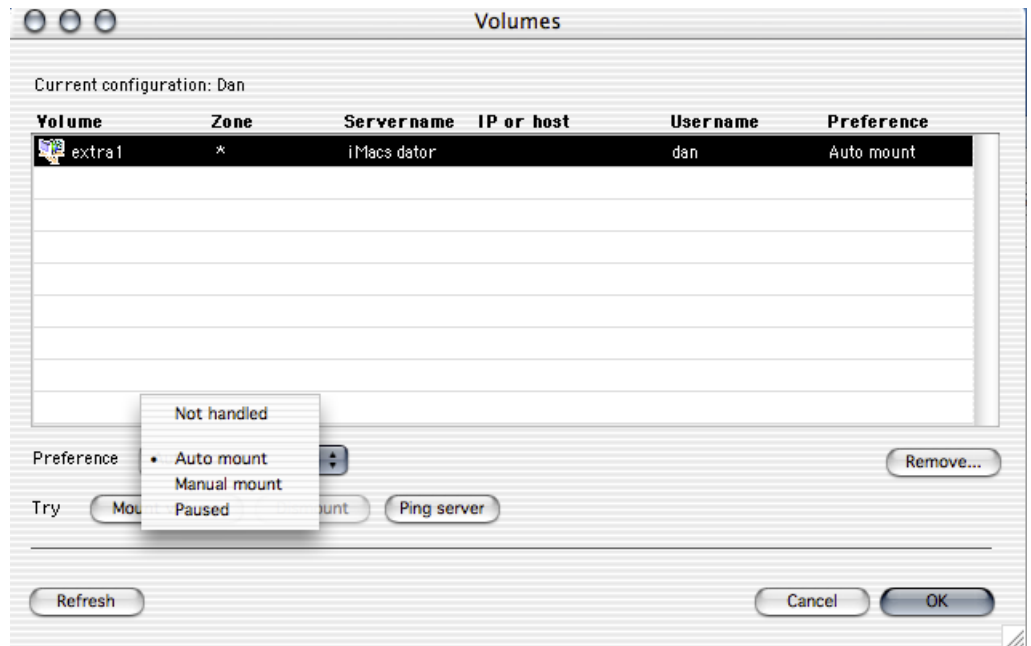
Reconnector has to be in active mode to automatically reconnect dropped volumes and to launch applications that needs to be launched.. When Reconnector is in active mode the Activate option at the Edit menu it changes to Deactivate.

Deactivate ⌘-H

Pauses Reconnector.

Volumes... ⌘-E

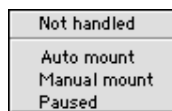
Open the window Volumes.



The Volumes window shows all mounted AppleShare volumes that currently are on the desktop plus the volumes that you have told Reconnector to handle. All commands in this window can be performed with more than one volume.

Preference

Each volume has its own Preference. Preference controls how a volume should be handled. When you choose any other preference than Not handled you must enter the AppleShare password.



Not handled

The volume is not handled by Reconnector. This is the default preference for the volume.

By choosing this preference you can also make sure that a wrongly entered password is erased.

Auto mount

If you want Reconnector to automatically keep volumes mounted then choose this preference. You must also choose this preference if you want Reconnector to function properly if you use Configurations to mount volumes.

Manual mount

Choose this preference if you only want to be able to mount volumes manually from Reconnectors main window.

Paused

If you know that an AppleShare server is going to be stopped temporary then you might set the preference to Paused to stop Reconnector from trying to mount the volume. When you do this Reconnector remembers the password so that you can change back the preference to Automount when the server is running again.

Remove... ⌘-X

Removes the selected volumes from the volumes list.

Refresh ⌘-R

Refresh is used to update the volumelist. You can also do this by closing and opening the Volumes window.

Mount volume ⌘-M

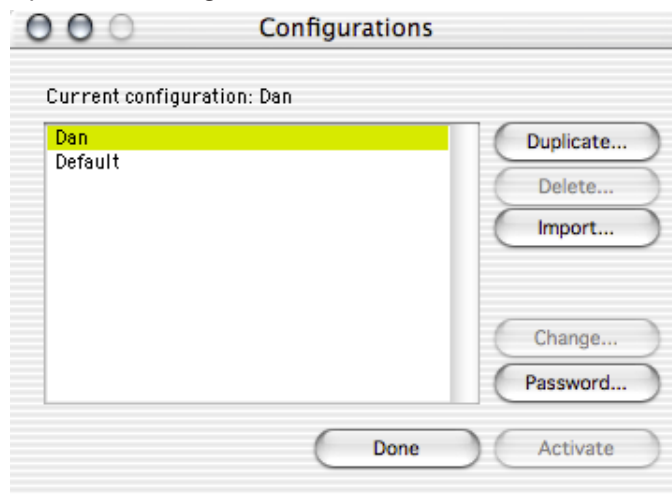
Mounts the selected volumes from the volumes list. We recommend that you do this to verify that you have entered the right password. You need to dismount the volume before trying to mount it.

Dismount volume ⌘-D

Dismount selected volumes.

Configurations... ⌘-K

Opens the Configurations window.



This window is being used to change and administer configurations. You can't create new configurations but you can duplicate existing ones. When Reconnector is launched for the first time a default configuration is created automatically. You can use ⌘-A to select all configurations.

Duplicate ⌘-D

Duplicate the selected configuration. When you do this you must enter a name for the new configuration.

Delete ⌘-X

Delete the selected configurations. This can't be undone. You can't delete the active configuration.

Import ⌘-I

Import a configuration from another users computer. If the imported configuration is password protected a dialog will prompt you to enter the password. If the configuraion isn't password protected then all AppleShare passwords will be deleted. All volumes in the Volume window will have the preference Not handled. This is done to ensure that configurations can't be moved or copied without permission or knowledge of the appropriate passwords. Note that all passwords are encrypted in Reconnector.

Change name ⌘-C

Change the name of a configuration.

Password ⌘-P

Password protect or change the password of a configuration. You can only change the password of the active configuration.

Activate Enter

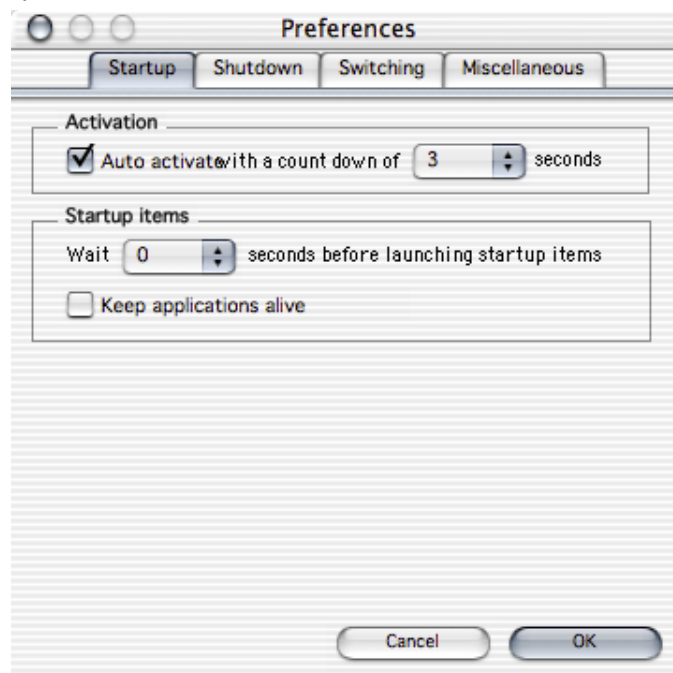
Activate the selected configuration.

Done ⌘-. or ESC

Closes the Configurations window without changing configuration.

Preferences...

Opens the Preferences window.



Startup: Activation

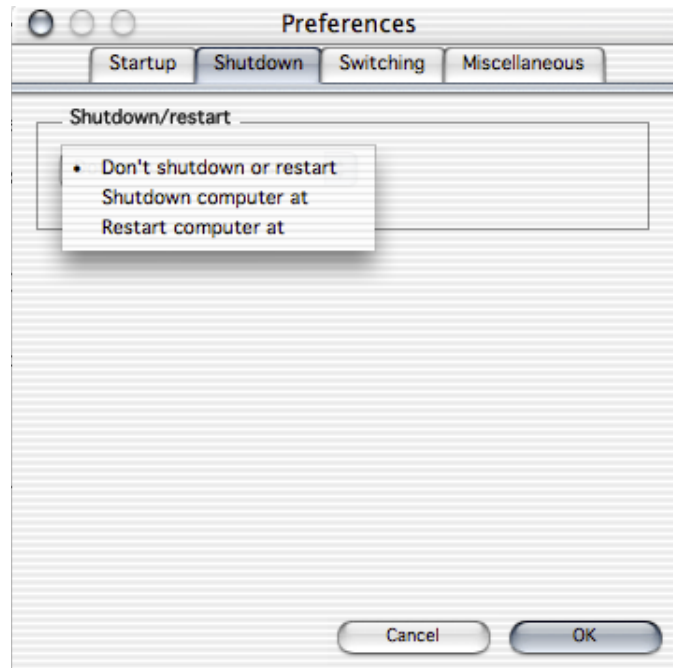
To let Reconnector activate itself after being launched you must check the Auto activate checkbox. You should also set a valid countdown time.

Startup: Startup items Wait

You can set how long Reconnector should wait, after it has mounted the volumes, before Reconnector launches the Startup items.

Startup: Keep applications alive

If you set this checkbox, Reconnector will make sure that all the applications that has an alias in the Startup Items Folder are running. If you quit an application while Reconnector is active, Reconnector will try to launch that application again.



Shutdown: Don't shutdown or restart

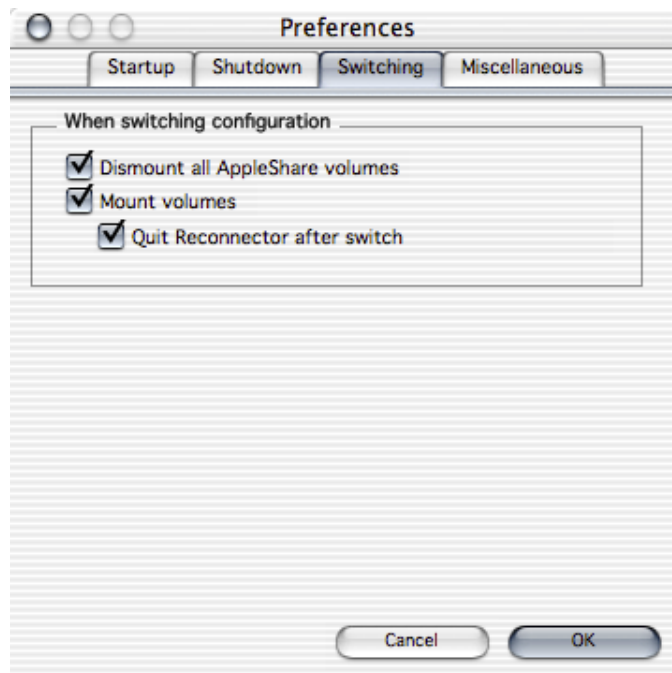
Just what it sounds like.

Shutdown: Shutdown computer at

This ensures that the computer is turned off at a certain time.

Shutdown: Restart computer at

This restarts the computer at a certain time.



Dismount all AppleShare volumes

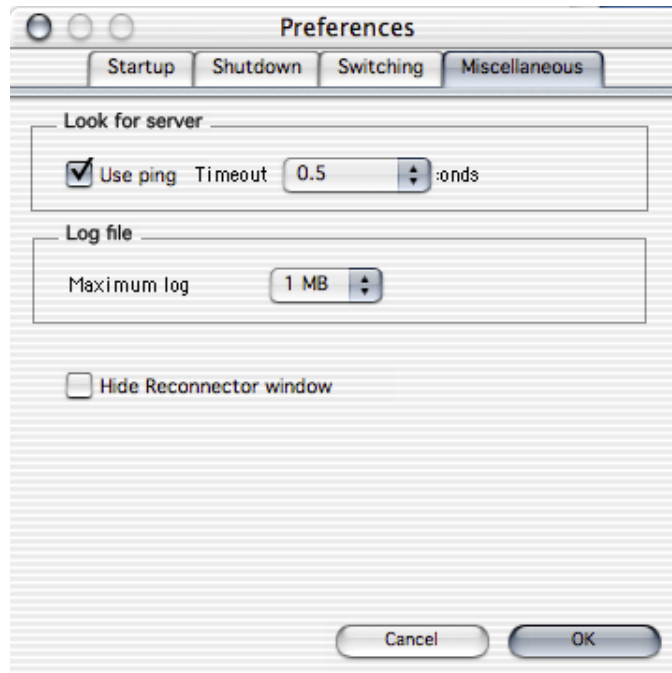
When selected and when someone changes configuration all AppleShare volumes that currently are on the desktop is unmounted. This is done to ensure that only the volumes in the configuration is mounted on the desktop after a configuration switch.

Mount volumes

When selected and when someone changes configuration the volumes in the new configurations is mounted.

Quit Reconnector after switch

When selected and when someone changes configuration Reconnector is quit.



Miscellaneous: Use ping

This setting should normally always be selected. By selecting this you ensures that Reconnector won't try to mount a volume until the volume really is available.

Miscellaneous: Maximum log

Sets how maximum size of the Reconnecetor logfile.

Miscellaneous: Hide Reconnector window

Hides Reconnectors main window.



infomaker